

In 1924, Henry Ford produced his 10-millionth Model T. As a publicity stunt, the car was painted with appropriate lettering and Lincoln Highway markers.

It was driven on the Lincoln Highway from New York to San Francisco by Frank Kulich, a well-known contemporary racing star. In commemoration of the 50th anniversary of the 10-millionth Ford's cross-country tour, the trip was re-enacted in 1974.

The 75th anniversary of the original 10-millionth Model T drive was commemorated with another re-enactment across the U.S. The car's current owner, Dr. Alan Hathaway, 70, of Davenport, Iowa, repainted it in the original manner. The car passed through Warsaw on June 9, 1999, and stopped by the marker in Funk Park.



HIGHWAY



AS

HABITAT



OR

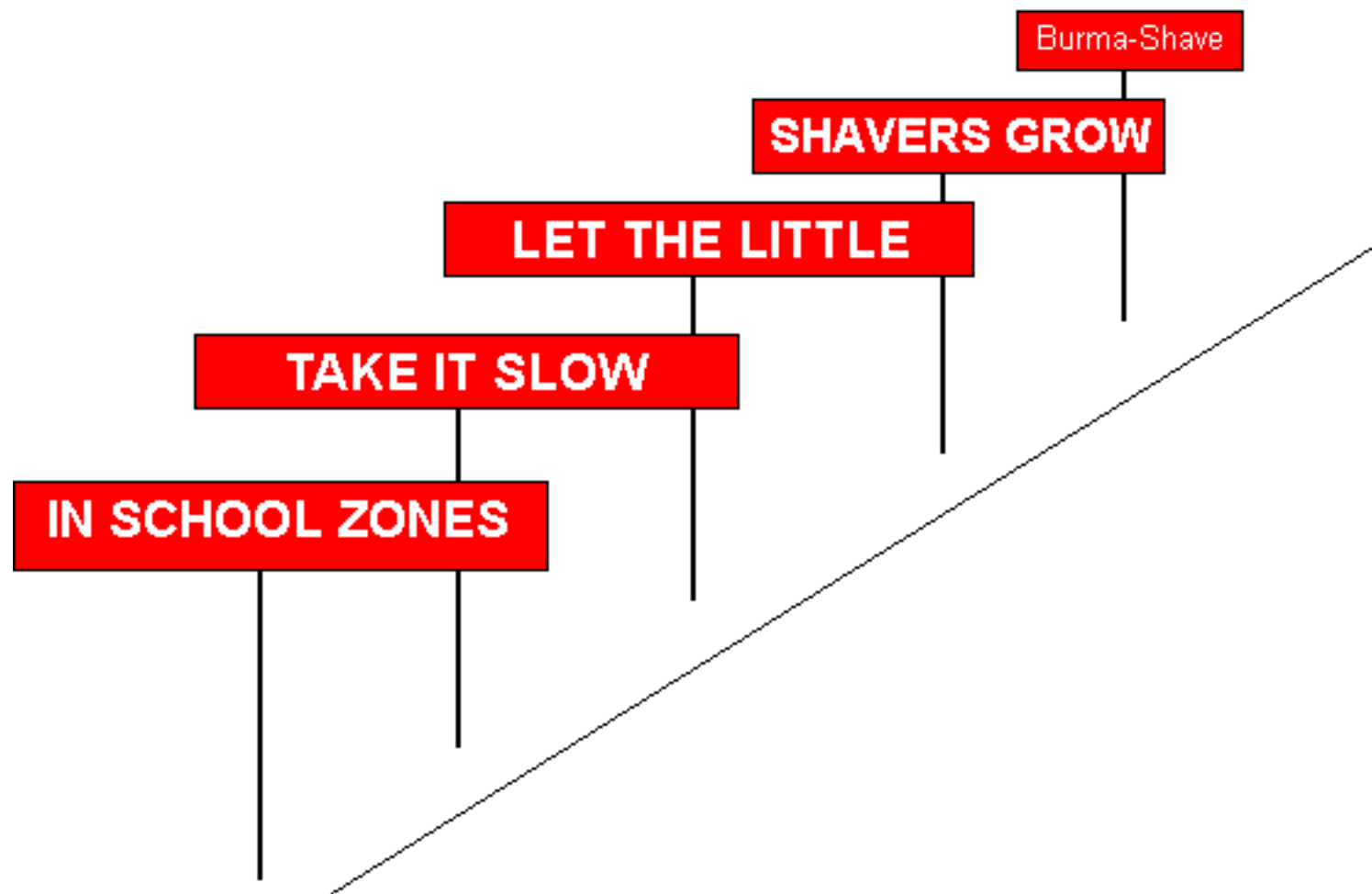


on the road



QuickTime™ and
GIF decompressors
are needed to see this





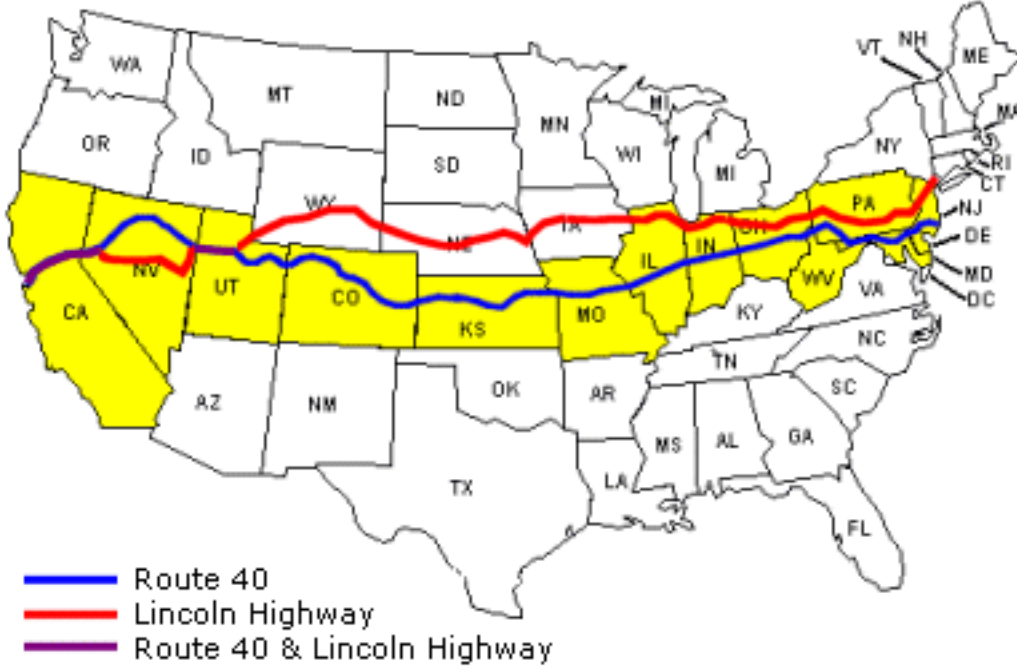


Coffee Pot-shaped Building, Bedford, PA:

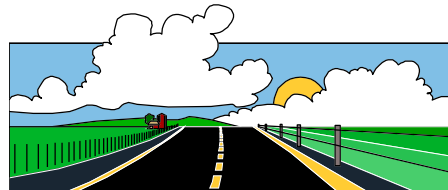
Back when Hwy. 30, the "Lincoln Highway," was the main NYC-SF artery, diversions like this were well visited. Built in 1925, the 18-ft. high Coffee Pot was originally a lunch place adjoining a gas station.

Even after the highways bypassed 30, the Coffee Pot catered to locals, sitting just west of town and across from the County Fairgrounds on Business 30. But time took its toll, the place changed hands and became a seedy bar. For the last decade or so it's been closed and for sale, tattered and drooping next to a drive-thru beer mart.

Things may be perking up for the Pot though -- preservationists hope to secure state funds for acquisition and renovation -- possibly as a Lincoln Highway Visitors Center. In September 2001, a \$35,000 grant was awarded by the state Pennsylvania to the Pioneer Historical Society to "further the feasibility study of the 1925 Coffee Pot."





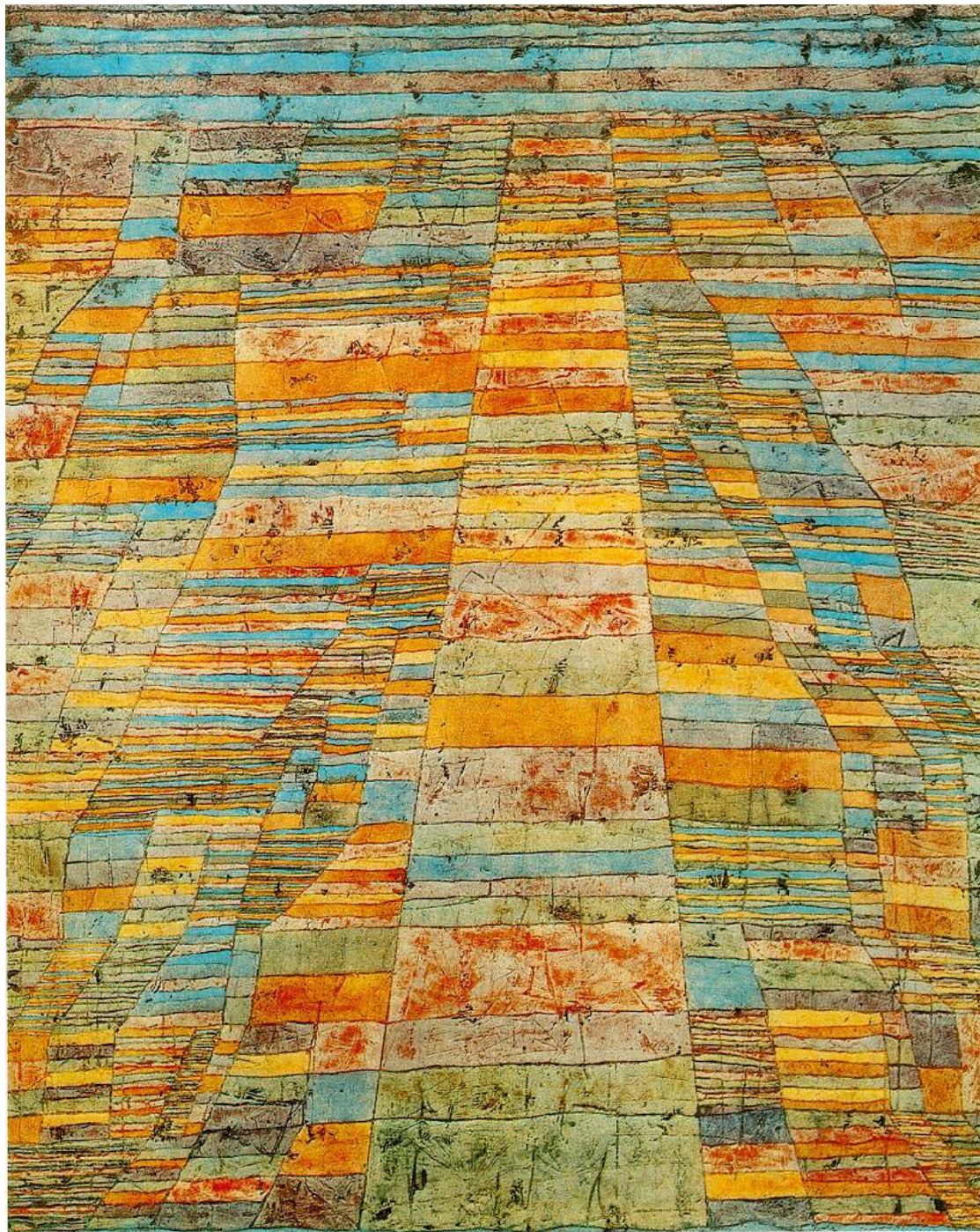




Doolin: Shopping Mall





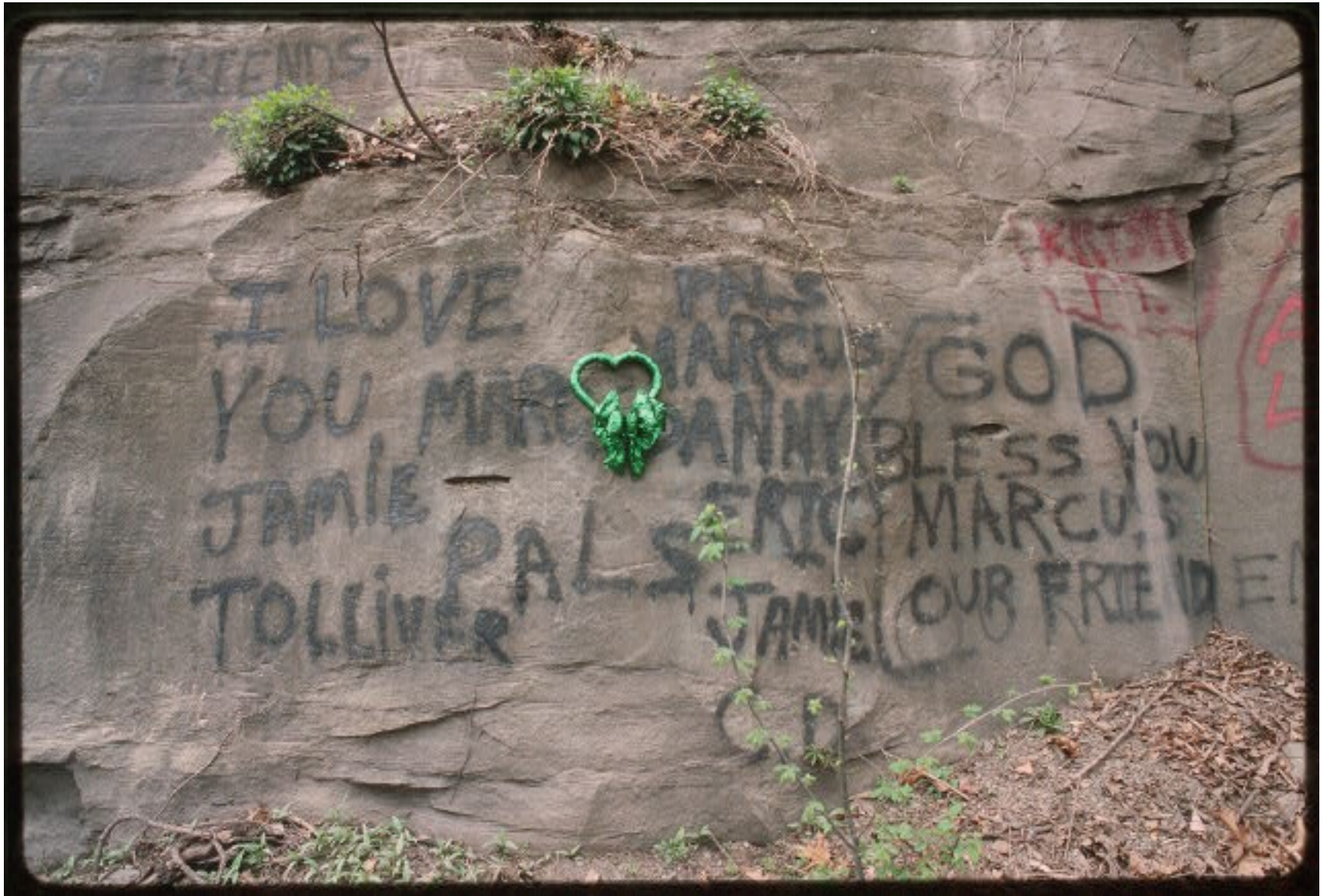


Klee:
the Highway

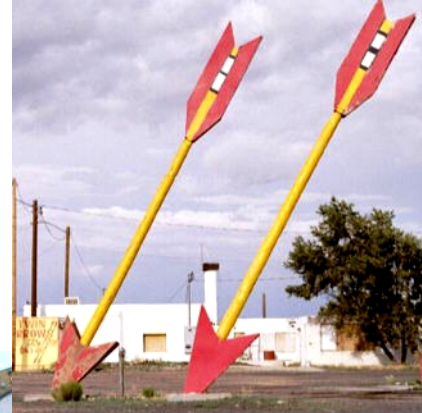


Grant Wood: Death on the Ridge Road





Eiler: Roadside Requim





Will Agar: Freeway



SUPER XX 15

ON THE ROAD

JACK KEROUAC





JACK KEROUAC
reads **ON THE ROAD**



**I mean, man, whither goest thou?
Whither goes thou, America, in thy shiny car in the night?**

-- Jack Kerouac, On the Road



tom barrow























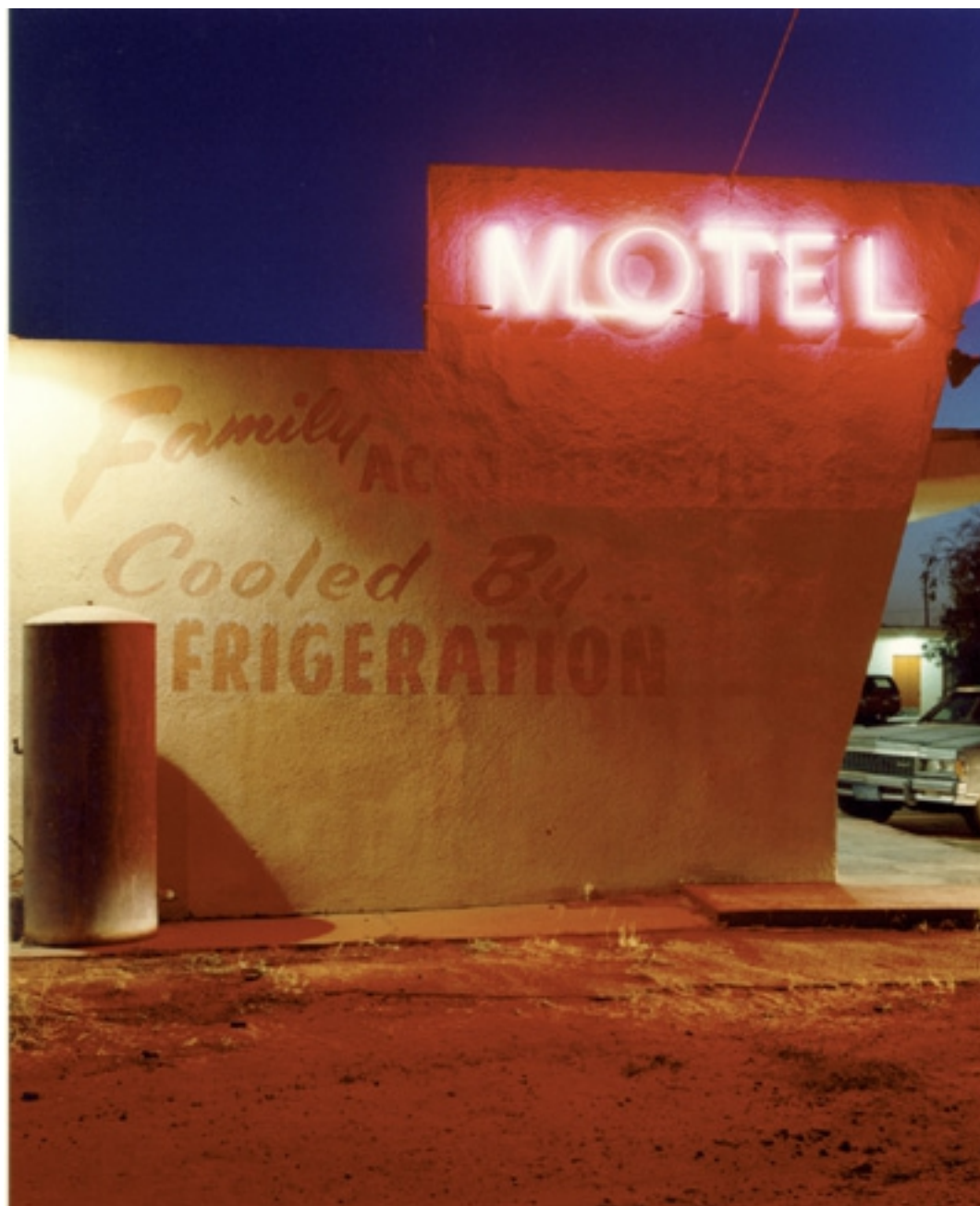




Jeff Brouws





























































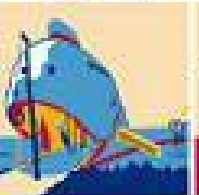
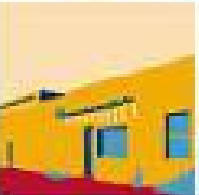
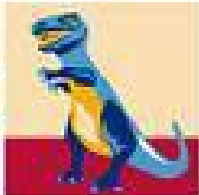
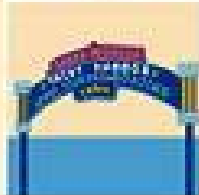


ESTHER BUBLEY





Dean: Traffic, LA





Route 66





ed ruscha



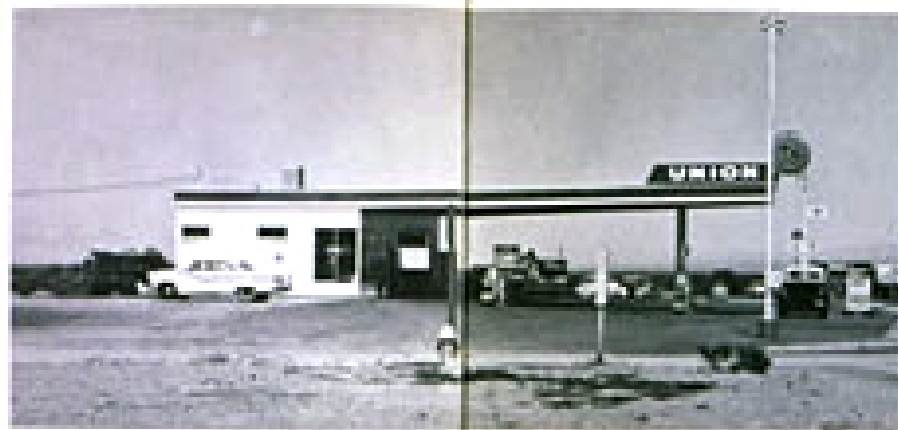


TWENTYSIX

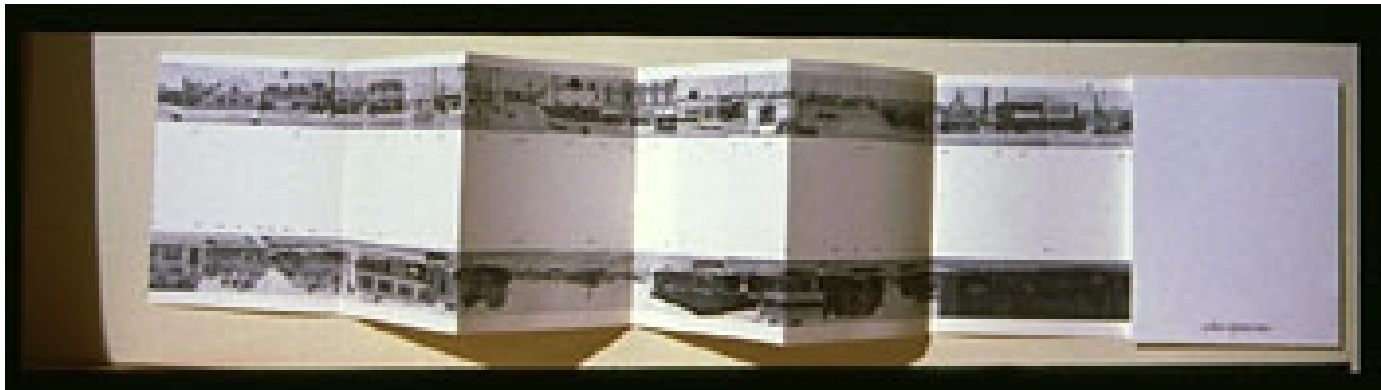
GASOLINE

STATIONS





UNION 76 GAS STATION



Ruscha: Sunset Strip















bohrod: vegetable stand



grace hartigan: billboard





Hazardous material number on truck: These tell emergency crews what to expect in an accident or spill. Here are some of the common or otherwise interesting numbers.

1005 ammonia

1013 Carbon Dioxide

1017 chlorine In case of spill, evacuate people within 1500 feet then protect people within 4+ miles

1044 fire extinguishers

1046 helium

1056 krypton (superman beware!)

1072 gas oxygen

1073 liquid oxygen



Dashed skid marks: are made by cars with anti-lock brakes, these brakes pulse on and off quickly this allows the wheels to turn so that the driver can steer while making an emergency stop.

On cars without anti-lock brakes professional drivers pulse the brakes to allow the wheels to turn so that they can steer during an emergency stop. The dash marks made by drivers tend to be longer and less regular than those made by anti-lock brake systems.



Birds can sit on a single high voltage wire and not get electrocuted. However if the birds touch two wires or a wire and a pole a large voltage across their bodies will electrocute them. The bird shown is a raven. If it were to touch two wires it would perch here nevermore.



Crocodiles. That's what truckers call the strips of truck tire tread found alongside the roadway.

Tires have tread so that they can remain in contact with the road when the road is covered with a film of water. The tread pattern allows the water to flow out of the way of the rubber, to allow the rubber to contact the road.



Cattleguards. Steel rails (like those used on railroads) can be placed across a road with spaces between them large enough to swallow a cow hoof. These "cattle guards" keep cattle from crossing through a gap in a fence, for example where a road goes through the fence.



Antenna.

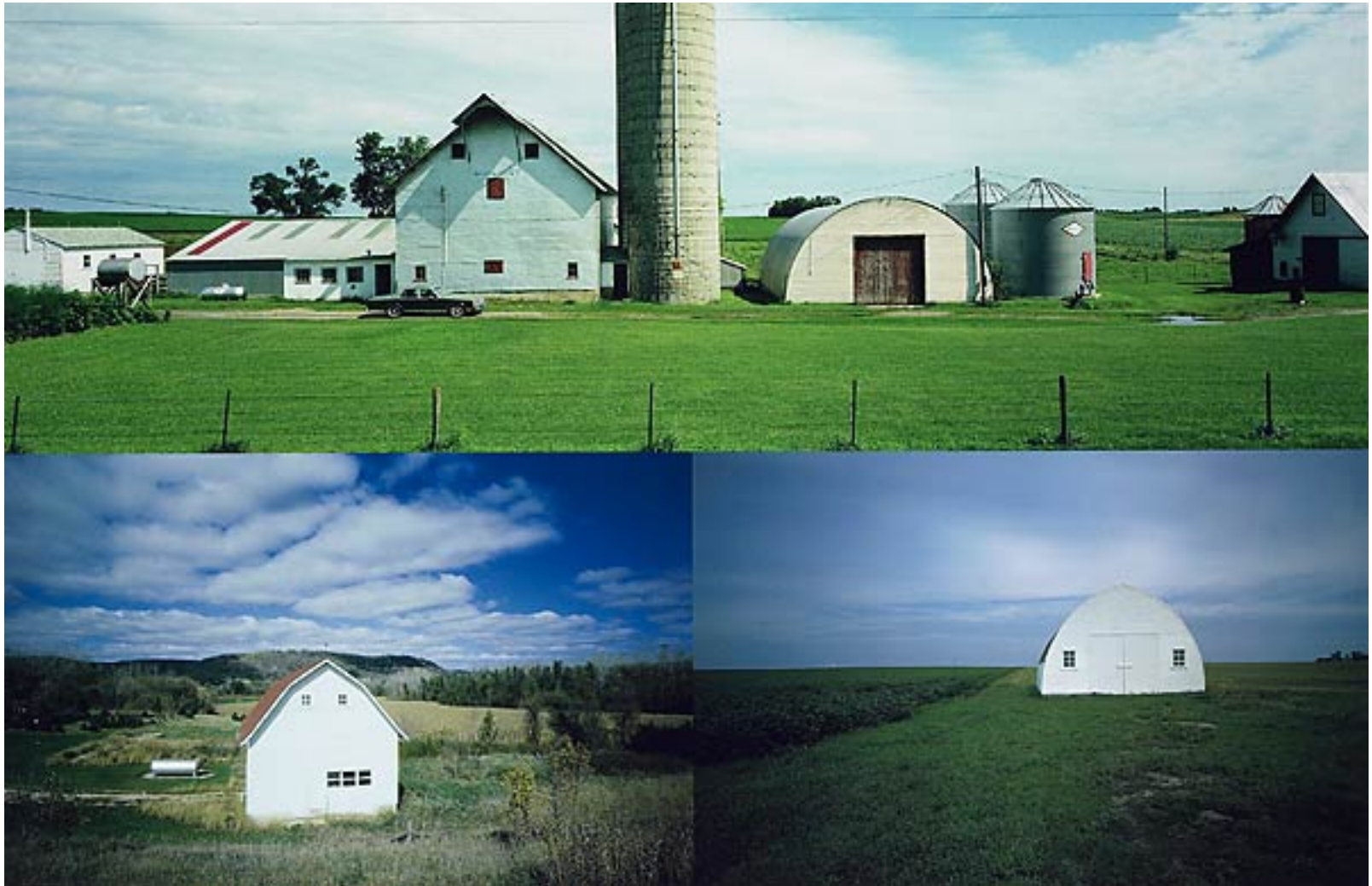
AM radio antennas are almost always tall. This is because AM radio is carried by long wavelength radio waves, around 1000 feet long. The longer the antenna, up to 1/2 a wavelength or 500 feet, the better its ability to transmit these waves. AM radio can be heard a thousand miles away because they bend around the curve of the earth by diffraction and also bounce off the ionosphere at night. (During the day the ionosphere absorbs radio waves.)



Sand Barrels.

To protect cars from collisions with solid objects, often highway crews place a line of sand barrels in front of the object. The sand barrels the car would hit first are only partially full of sand. The barrels further back in the line contain more and more sand. This brings the car to the most gradual possible stop. Even so the deceleration of a car going 60 mph when it hits a sand barrel system can be 5 g's. 5 times the acceleration of gravity.

http://isaac.exploratorium.edu/~pauld/books/car_science/glove_compartment_science.html



Klipper: Minnesota Configuration





Lange: Ditched, Stalled, Stranded, California

A photograph of a busy highway at night, likely in Los Angeles, showing a dense traffic jam. The scene is illuminated by the headlights of the cars and the warm glow of streetlights lining the road. The cars are mostly dark-colored, and their taillights create a series of red dots in the foreground. The background shows a hazy night sky and distant city lights.

LIFE

JUNE 20, 1960





elaine mayes



John Schott



























berenice abbott..... route 1

















Have a nice trip!